

# ELABO Learning Spaces



# Welcome to ELABO



## Confidence

Training young people is a responsible task. ELABO is aware of this responsibility, and we can support you with all of our expertise to achieve the goals of instructors, teachers and students.

## Cost-effectiveness

Do you want to train your students and apprentices in the best possible way, while also ensuring economic efficiency? Successful teaching must be achieved using solutions that are also intelligent from a financial point of view. This requirement has made ELABO a force to be reckoned with.

## Cooperation

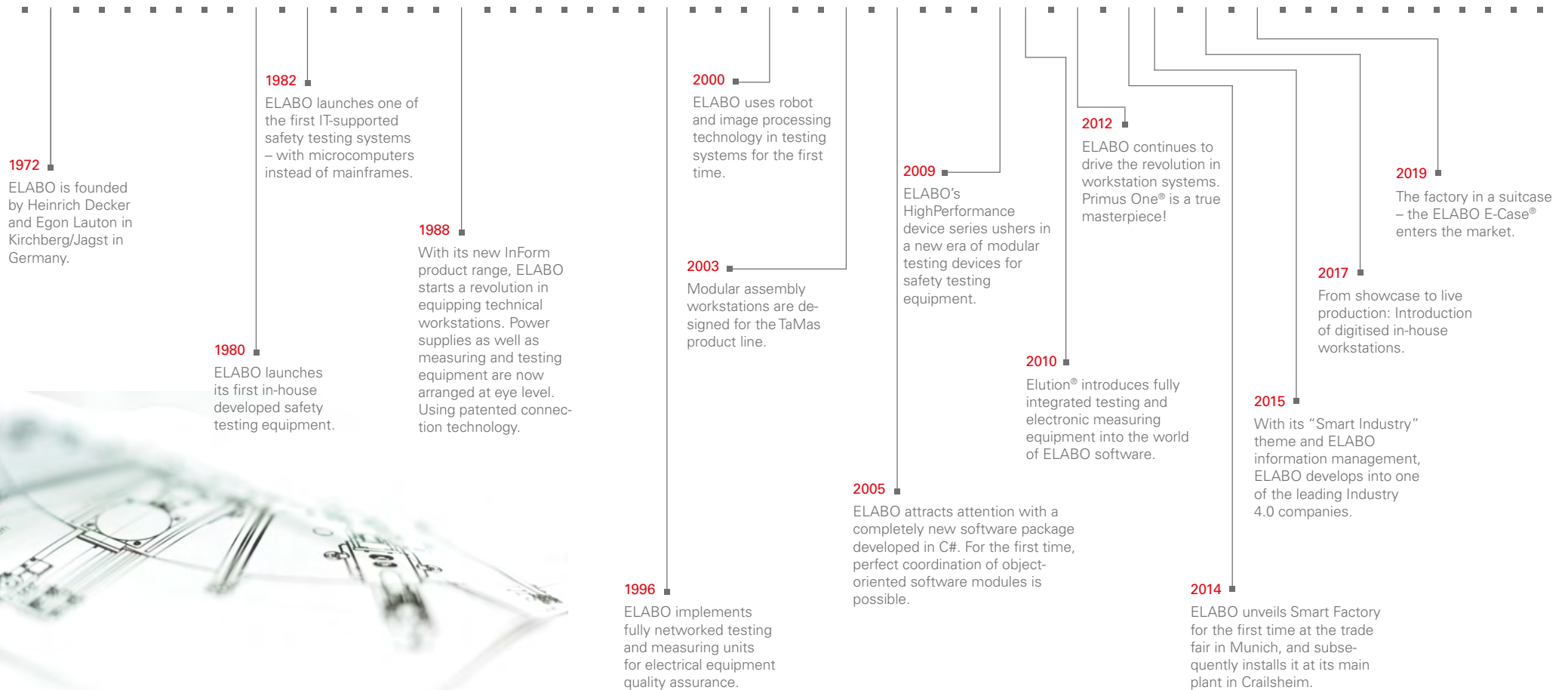
We have perfected our capability of creating high-quality systems with superior long-term cost-effectiveness in numerous projects with excellent training institutions. Are you looking for a partner to equip your training laboratory? If so, please arrange an on-site meeting with our local consultants to discover more about our products and our expertise.

## Performance

The electronics and electrical engineering area is currently under extreme pressure to perform. The majority of technical products and processes are based on electrical solutions, and depend on the quality thereof. The rate of innovation is tremendously high, and training has to keep up with the speed of development. ELABO is comfortably capable of fulfilling these requirements, and has been a leading equipper of training laboratories for decades – and one of Europe's top providers of industrial testing systems and quality laboratories in the electrical area.

# The ELABO GmbH journey

## Innovative solutions since 1972



# ELABO integrated solutions

## 5 crucial reasons

### The complete product range

ELABO provides training facilities for equipping professional, functional training rooms and make contemporary, successful teaching possible. ELABO's services also set standards. If a device requires calibrating or is defective, for example, we can offer you a free pickup and return service and lend you equipment if necessary.

### Always in step with the times

ELABO promptly responds to current technological and educational developments with hardware and software solutions, teaching resources and services for training in electrotechnical professions. If training is required in new professions, ELABO will promptly provide the necessary equipment. Our hardware and software solutions are perfectly coordinated for this purpose.





### Outstanding handling

ELABO systems have a modular design, and can be easily adapted to changes in training concepts. This makes it easy for instructors to focus on their primary task – teaching. All operating functions are essentially self-explanatory and/or quick and easy to learn. Using the equipment and the furniture is very intuitive, and adjustments to new projects are straightforward and completed in no time. The equipment and furniture also have a compact footprint. They can be disassembled, easily transported and stored in a space-saving way.

### Ideal learning atmosphere

We create an ideal learning atmosphere with modern ergonomic elements and customised arrangement of the equipment and interfaces. One of the keys to this success is not only optimum on-site consultation, but also numerous pioneering furniture and equipment concepts such as our perfect cable management or colour concepts, which are not just visually appealing, but also support operation and operating safety in an intuitive way. This highly professional standard gives students an idea of their professional future, and tangibly motivates them.

### Impressive decision-making and responsibility

Using ELABO training systems, teachers, lecturers and instructors can design forward-looking and technically impressive training which is characterised by optimally referencing real-world applications, with contemporary teaching resources which reinforce their authority as providers of premium knowledge. The control functions of the ELABO software and networking technology help them to quickly and confidently shut down disrupters. Grades are impressively underpinned by (automatically generated) documentation of the performance of their apprentices and students in practical classes.



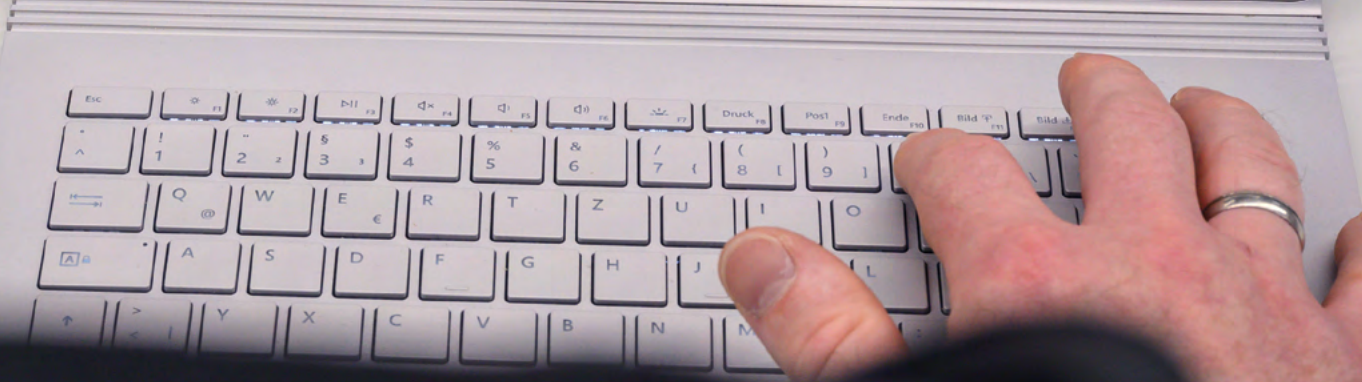
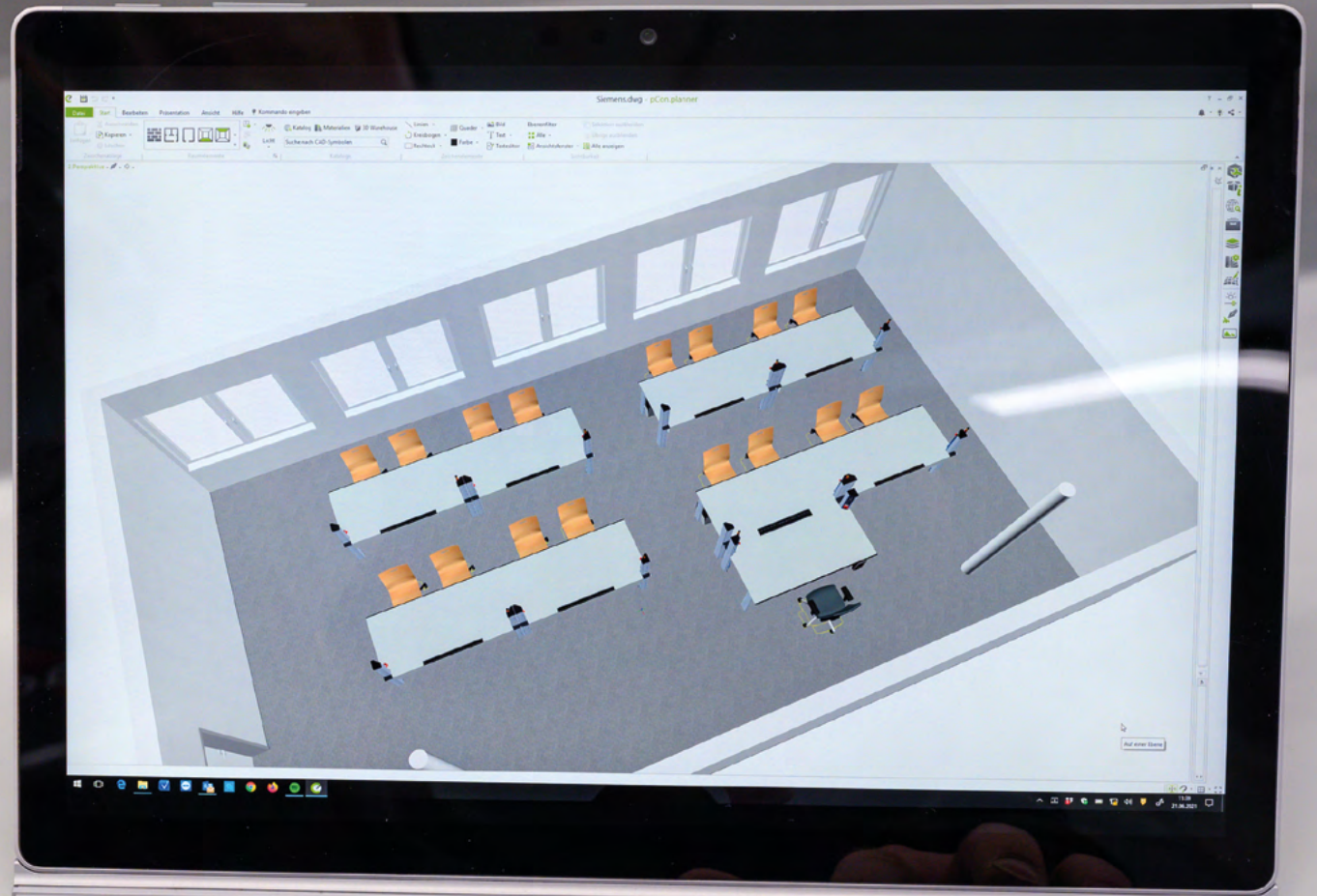
ESD product certificate  
Primus One®



Certificate of tested safety  
Primus One® and  
Primus Basic



Certificate of quality  
management  
DIN EN ISO 9001:2015



# Professional planning at your premises

We bring life and new ideas into your training rooms



Joint planning with our customers

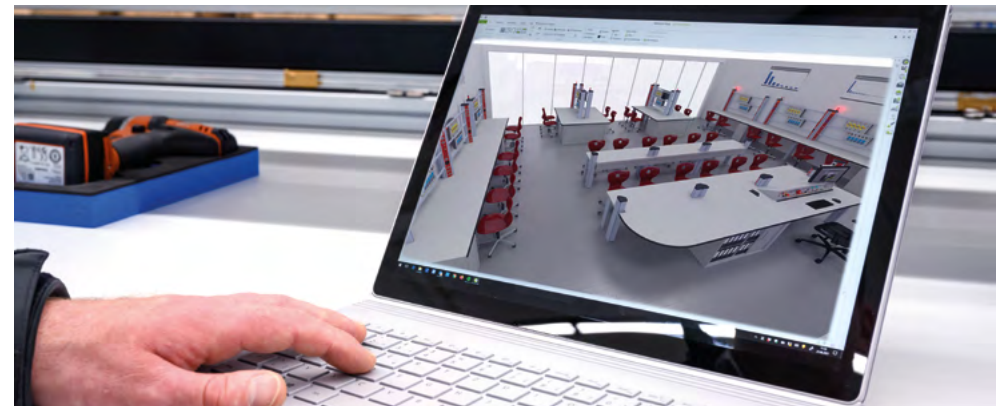
We have been consulting with our customers and planning workstations and technical classrooms for them since 1972. We have moved from pen and paper to modern software and rendering programs. What we notice time and time again is the fact that decision-making is made significantly easier if the result is visualised immediately.

The pCon.planner 3D room planner from EasternGraphics makes it possible to plan and visualise rooms in 3D, and provides our customers with the perfect basis for decision-making.

As a modern enterprise, we also use new visualisation methods to simplify your planning and purchasing decisions. The use of AR representations allows you to virtually add furniture systems to your rooms and discuss the current planning status with colleagues and supervisors.



Planning using Augmented Reality



Professional 3D room drawings

# Primus One® for training



Certificate of  
tested safety  
Primus One®



**Primus One® for your training.** Primus One® is a technical workstation which fulfils the highest demands with regard to quality and functionality and also key DIN standards. It is ergonomically perfect for all requirements, user-friendly and very clearly arranged. Its timeless design blends in with contemporary learning environments in an optimal way. The reinforced profiles make this a very sturdy workstation, and provide room for perfect cable routing. The workstation can be perfectly adapted to your specific requirements because of the modular assembly system. The intelligent fold-away technology provides maximum safety and efficient table usage. When it is not in use, electric equipment can therefore disappear inside the table. Primus One® is the high-end solution for maximum requirements in your training area.



# Primus Basic for training



Certificate of  
tested safety  
Primus Basic



**Primus Basic for your training.** Primus Basic is the efficient workstation variant. It is perfect for arrangements in rows or blocks, and is also compatible with the Primus One® system. The sturdy table base is available with 4 legs or as C-shaped legs. The height-adjustable C-shaped variant provides your training workstations with maximum ergonomics. A large cable tray allows the cables to be neatly stowed away in the workbench, and makes it possible to route cables through rows of workbenches. A cable flap across the entire width of the table provides access from above. Closing the cable flap allows you to use the entire surface of the workbench. Equipment is stored in the 3HU electronics superstructure above the worktop. Customised to your requirements, Primus Basic offers an efficient way of equipping your training workstations.

# Intelligent solutions for electrical training

## Overview



### Customisable laboratory workstations

Well thought-out workstation solutions which are precisely tailored to your requirements provide the basis for the successful learning outcome of your apprentices. State-of-the-art design meets the highest level of functionality and quality.

Thanks to its modular design, the system can be easily adapted to changing learning environments.



### Electronics modules

3HU electronics modules with fold-away technology for maximum space saving, Primus One® adjustable profiles or in ergonomic superstructures. Discover a wide range of electronics modules for training, such as DC stabilisers, AC actuators, digital multimeters, function generators and a wide range of other single- or multi-purpose testing equipment.



### Mobile solutions

ELABO's mobile solutions provide maximum flexibility. You can flexibly adapt your learning environment to a specific learning situation at any time – using mobile side tables, didactic carts, mobile experimenting tables, and much more.



### Hexagonal workbenches and group workstations

Combining six workstations in one workbench saves a considerable amount of space, making it ideally suitable for efficient room design. The six workstations are equipped with a customisable motorised fold-away 2-row 3HU cockpit superstructure.



### Experimenting islands and installation cubicles

These hands-on training solutions make sustainable teaching of electrical installation knowledge possible. These highly flexible solutions make practical teaching with electrical installations and teaching aid experiments possible. Perforated steel or wooden panels and mobile or stationary versions are possible in accordance with your specifications.



### Elution® software for training

Elution® software includes an extensive bundle of functions for your training needs. It helps the instructor to maintain an overview of workstations and students while allows the apprentices to carry out their work using modern solutions.



### Storage space solutions

A tidy house, a tidy mind – and the foundation for successful training. You can find the right furniture in our product range. Starting from tall cabinets to (mobile) side cabinets, or seating furniture doubling as storage space. We would be pleased to advise you regarding customised storage space solutions for your requirements.



### Accessories

In addition to our intelligent training workstations, we can offer you the right accessories for your perfect learning environment. Discover a wide range of chairs, lighting, experimenting frames, tools, and much more.

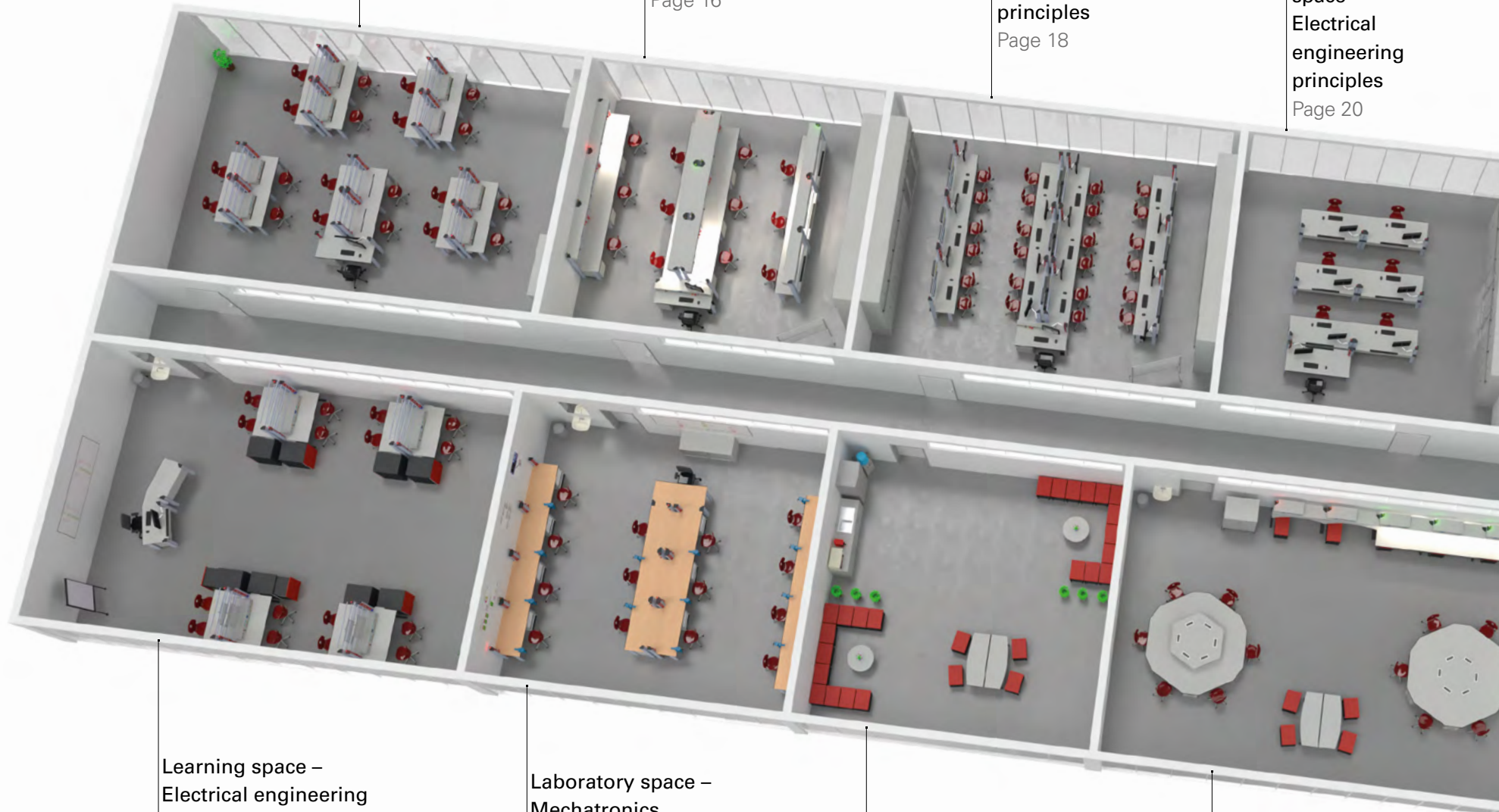
# ELABO Learning Spaces Overview

Laboratory space –  
Mechatronics  
Page 14

Laboratory space –  
Automation technology  
Page 16

Laboratory space –  
Electrical engineering  
principles  
Page 18

Laboratory  
space –  
Electrical  
engineering  
principles  
Page 20



Learning space –  
Electrical engineering  
Page 26

Laboratory space –  
Mechatronics  
projects  
Page 28

Communication  
space

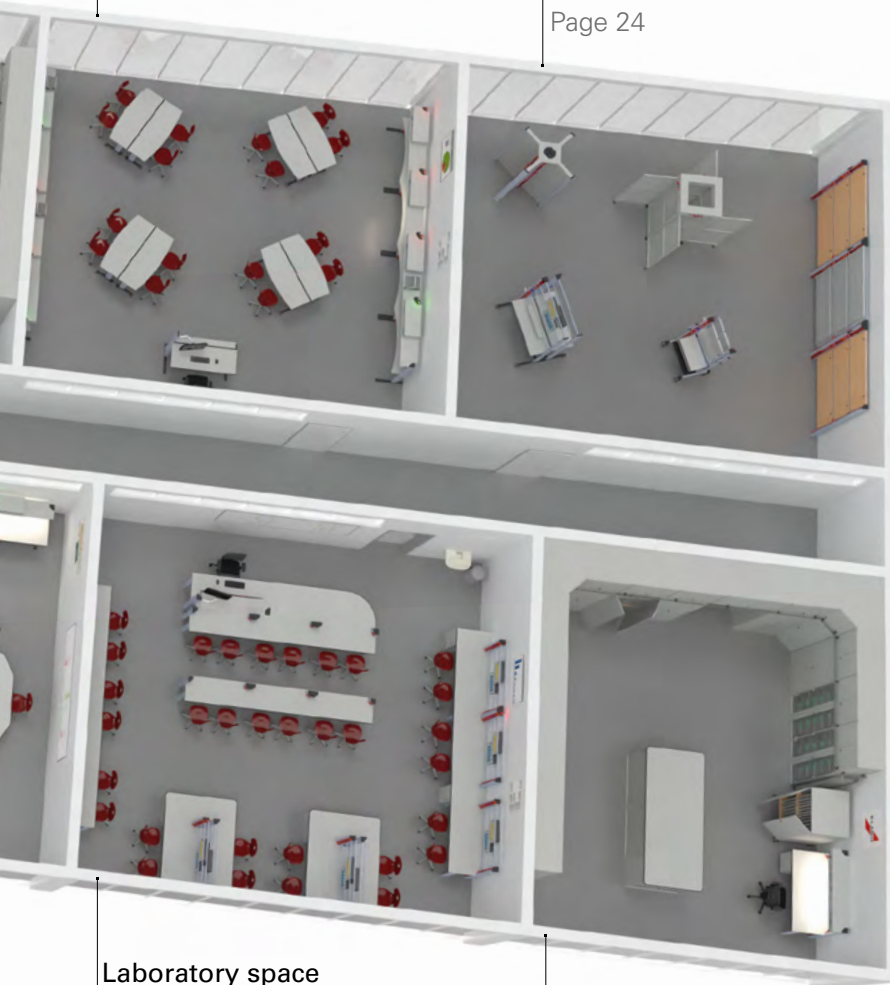
Learning space –  
Electronics  
Page 30

**Learning space –  
Electrical engineering  
in theory and practice**

Page 22

**Flexible  
hands-on spaces**

Page 24



**Laboratory space  
Automation technology**

Page 32

**Preparation and  
storage**

Page 34

### **Captivating training systems.**

We provide a wide range of products and services for training and further development. Numerous customers, colleges and universities are already embracing our customisable solutions. Our training systems are ideally suitable for all professions in electrical engineering and associated areas. ELABO also provides everything you need to realise state-of-the-art contemporary teaching.

### **Forward-looking training facilities for modern classes**

With a constant eye on future progress, our systems are subjected to continuous further development to ensure that they are in a forward-looking state of development.

### **Perfect coordination**

The hardware and software, teaching material and services are perfectly coordinated for training in electronics and electrical engineering.

### **Customised adaptability by means of modular systems**

Tailor-made solutions for each individual customer

### **Hands-on transfer of knowledge**

Easy start into topics such as Industry 4.0 with our ELABO knowledge transfer learning concept consisting of software, teachware and hardware.

Well thought-out room equipment in conjunction with Elution® – the software suite for your training needs – the guarantee of the highest level of precision, and all from a single provider!

Made by ELABO.

# Laboratory space – Mechatronics





### 3HU Primus One® Fold-away workbench

- Lowerable equipment body
- Fully electrically pre-wired with equipment connections
- Prepared for holding 3HU electronics modules
- System profiles can be extended upwards
- Optionally available with height adjustment (see page 27)



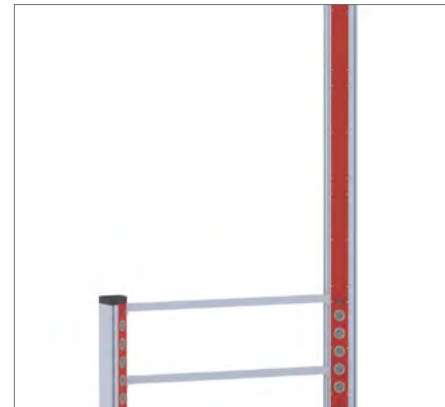
### Large-volume cable tray for horizontal cable routing

- No dangling cables in the floor area
- Front access
- End-to-end accessible media routing from table to table



### Plug-in Primus One® Adjustable column

- Easy integration of power strips
- Profiles can be extended without loss of stability
- Ergonomic 40° layout facing the user
- Circumferential heavy-duty slots for accessories
- Installation of replaceable frame profiles



### Flexible cable routing

- Routing of all electronic connecting cables along the ceiling, floor or wall directly to the workstation

Building mechanical, electric and electronic components, assembling complex systems, installing control software and maintaining systems – the job description of a mechatronic professional is multifaceted.

Just like the multifaceted solutions from ELABO.

Future mechatronic professionals will find the ideal learning environment in our mechatronics laboratory space, coordinated with the course content. The Primus One® workstation with fold-away technology and 3HU electronics modules and the Primus One® adjustable profiles provide the highest standard of functionality and safety. The 3HU equipment body and the adjustable profiles tilted at an angle of 40° in relation to the user are equipped in accordance with your specific needs. Functional storage space solutions from ELABO complete the perfect learning atmosphere.



### Cabinet combination

- Closed or with ESG glass
- Customisable division
- Circumferential sealing lips for keeping out dust
- Sturdy 100mm base
- Lockable
- Optional wireless solution

# Laboratory space – Automation technology

To be able to design large computer-controlled systems, automation technology apprentices need to analyse complex functional relationships and processes and build measuring or control devices, for example. They can ideally learn these principles in the automation technology laboratory space from ELABO. Primus One® laboratory workbenches meet the highest standards for modern training, and provide a sufficient amount of room for integrating relevant electronics and holding didactic boards. Safety, ergonomics and functionality always take top priority.



## Primus One® laboratory workbench

- Sturdy workbench with 4 legs
- The workbench legs are flush with the workbench top
- Laminate worktop with replaceable front edge
- Large-volume cable tray for horizontal cable routing
- 3HU electronics superstructure



## Base unit

- Smooth-running metal drawers with soft closing mechanism
- 110 % full extension drawers
- Also available with hinged doors
- Handle-less fronts
- Also available with handles
- Extensive range of storage elements
- Central lock with flip key, with master key system capability

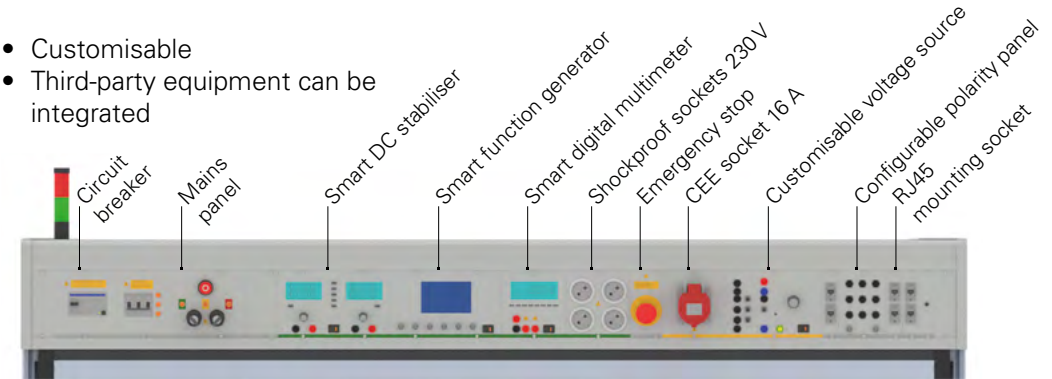






### 3HU cockpit superstructure

- Customisable
- Third-party equipment can be integrated



### DIN A4 experimenting frame

- 2 levels
- For holding didactic boards
- Internal brush strip for soundproofing
- Prepared for suspending perforated steel plates



### LED organiser light

- Organiser panel and touch unit
- Continuously adjustable light colour from warm white (3000K) to cool white (5000K) via the touch control panel
- Light segments can be actuated individually
- Cable holder for optimum cable routing
- Optional LAN interface for remote control of the light

# Laboratory space – Electrical engineering principles

Creating technical drawings, programming electrical engineering components, conducting tests and producing measurement reports, analysing errors and devising solution proposals. Electrical engineering apprentices will learn the necessary principles in ELABO's electrical engineering laboratory space. The state-of-the-art design of the Primus One® workstations meets the highest level of functionality and safety.

Successful learning is supported by the Elution® software. Smart room control systems and interactive digital work instructions for teaching the course content make the training even more successful. The safety of the apprentices always has top priority. Workbench monitoring devices such as optional Emergency-Stop detection, residual-current monitoring and the activation of various voltage levels such as safety extra-low voltage, low voltage and IT supplies are just some of the applicable options.





### Primus One® teacher workstation

- 3HU electronics superstructure
- Primus One® adjustable profile
- TFT monitor brackets and PC holders for mounting on adjustable profiles
- 19" room power supply for protecting student workstations
- Individual workplaces can be switched in groups
- Rear workbench legs below the worktop with power strip



### 19" room power supply

- For protecting the student workstations
- Tailored to your needs and requirements



### Elution® software

- Room control system
- Workbench monitoring ON/OFF
- Emergency stop detection
- Residual current monitoring
- Group switch for voltage levels
- Digital instructions for carrying out experiments

More information  
on page 36

# Laboratory space – Electrical engineering principles

Discover the space-saving room concept for theoretical and practical application with Primus One® adjustable workbenches.

Clear organisation, considered actions and straightforward handling are the basis for successful training.

All ELABO systems are largely self-explanatory.

Apprentices and students will very quickly learn how to operate the incorporated modules.

They are supported by interactive digital Elution® software instructions. The software also accompanies the apprentices in controlling measuring equipment in specified voltage levels, and reliably documents the measuring data.

The result is maximum safety and maximum learning success.



## Primus One® adjustable workbench

- Sturdy workbench with 4 legs
- Large-volume cable tray for horizontal cable routing
- Lowerable cable flap
- Integration of personnel safety systems with switch-on panels, circuit breakers, residual current devices and emergency stop
- Integration of 230 V shockproof sockets, 16 A CEE sockets and many other modules



## Elution® software

- Interactive digital work instructions
- Control of measuring equipment
- Measuring data documentation
- Room control system
- Workbench monitoring ON/OFF
- Emergency stop detection
- Residual current monitoring
- Group switch for voltage levels

More information  
on page 36





# Learning space – Electrical engineering theory and practice



**Arrangement option 1**  
U-shaped



**Arrangement option 2**  
Group work



**Arrangement option 3**  
Classroom teaching style

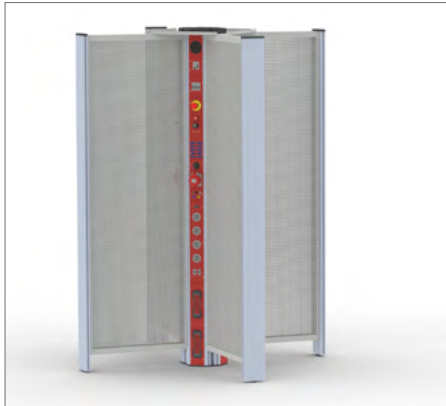


Modular, flexible laboratory furniture gives you the opportunity to quickly and easily adapt rooms to the respective learning situation by creating a new room arrangement in no time. ELABO Primus One® systems, with a combination of a basic unit with in-built power strip and mobile side tables, make this possible at any time.

Can be configured quickly and flexibly. The ideal combination of theory and practice.

# Flexible hands-on spaces

In order to safeguard learning success in the long term, you must use what you have learned in practice. ELABO's flexible hands-on spaces make variable and practical training possible, creating the best requisites for the experts of tomorrow. Whether it is mounting fittings to wooden boards or testing cabling on perforated steel plates – ELABO provides a wide selection of different learning stations for your apprentices. The intelligent electrification in Primus One® adjustable profiles ensures that the necessary connections are always within reach. Mobile solutions provide additional flexibility and efficient use of space.



**Primus One® learning station**

- Space-saving, variable and flexible solution for modular hands-on teaching
- Highly efficient use of space
- Space for four people at the same time
- In-built power-strip with emergency stop (customisable configuration)
- Mobile model available



**Mobile learning station**

- For electrical installations and teaching aid experiments
- In-built power strip
- Available with different equipment variants (perforated steel plate, replaceable frame profile or wood)



**Primus One® base unit**

- Integration of sockets, circuit breakers, residual-current devices, compressed air, different voltage sources and numerous interfaces in Primus One® adjustable profiles
- Version with perforated steel plate or as a wooden assembly wall for a wide variety of applications.
- Sturdy, space-saving model for hands-on teaching



**Mobile experimenting table with Primus One® adjustable columns**

- To install adjustable profile boards
- Variable and flexible, can be used anywhere
- Replaceable frame profiles allow didactic boards to be used for hands-on teaching or electric circuit exercises





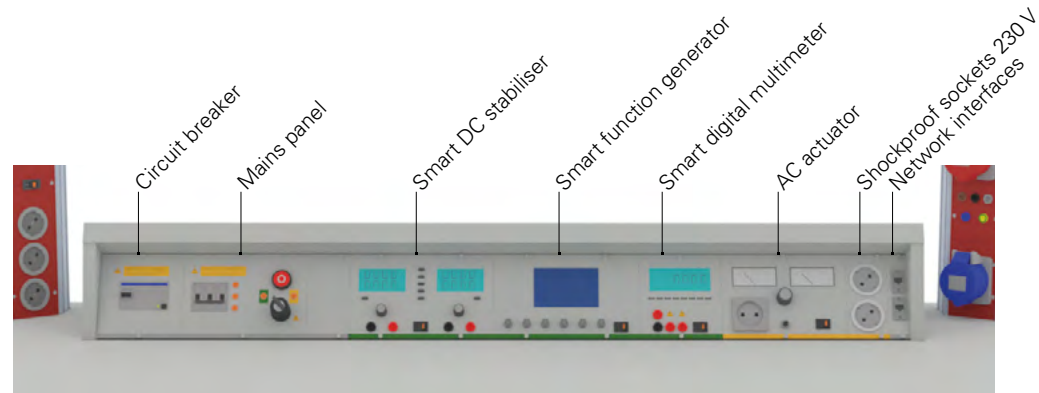
# Learning space – Electrical engineering

Demanding exercises are easier to deal with on ergonomic workstations which also promote health and learning.

Optimum learning environments therefore also encompass maximum ergonomics. Primus One® laboratory workbenches come with motorised height adjustment or electronics modules tilted at an angle of 40° towards the user to provide the ideal prerequisites. Well thought-out storage space solutions ensure that the workstation is tidy and attention is focused on the task at hand.

The robust laboratory workbenches have a default useful load capacity of 250 kg and a lifting range of 750 – 1200 mm. Higher load capacities and different lifting ranges can be individually planned.





### 3HU cockpit superstructure

- Customisable
- Third-party equipment can be integrated



### Primus One® Instructor workbench

- 3HU electronics superstructure
- Fully electrically pre-wired with equipment connections
- Adjustable profile with TFT holders for monitor installation
- System profiles can be extended upwards
- Lockable mobile base unit with drawers



### Height-adjustable 3HU Primus One® fold-away workbench

- Lowerable equipment body
- Fully electrically pre-wired with equipment connections
- Prepared for holding 3HU electronics modules
- System profiles can be extended upwards
- Laboratory workbench with modern motorised height adjustment
- Zero maintenance
- Adjusting range: 750 – 1200 mm



### ELABO Orga Tower

- Storage space marvel
- Installation of measuring equipment, tools and DIN A4 didactic boards
- Customisable interior
- Lockable

# Laboratory space – Mechatronics projects





The mechatronics project room is equipped with sturdy laboratory workbenches from the Primus One® adjustable modules set. Welded workbench frames and durable 30 mm multiplex worktops are ideally suited for mechanical tasks. The adjustable column can be customised as per your needs with adjustable installation boards from the Primus One® product range. Circuit breakers, residual-current devices, CEE sockets or a DC voltage supply can be easily integrated. Steel bench vices can also be installed at any time. Signal lamps and emergency stop safety devices provide a high degree of safety for laboratory operation.



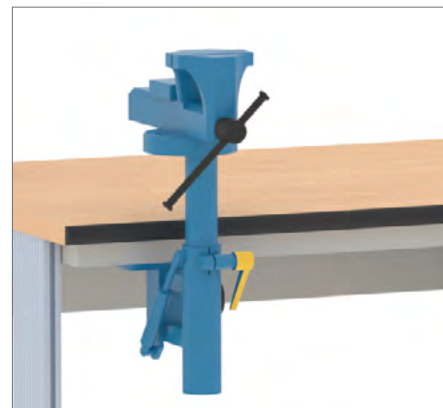
### Primus One® adjustable workbench

- Workbench with 4 aluminium profile legs
- Sturdy welded steel frames
- 30 mm multiplex worktop with ergonomic, replaceable front edge
- Large-volume cable tray for horizontal cable routing
- Sturdy steel plate drawer cabinet with full extension and ergonomic handles



### Primus One® adjustable columns

- Primus One® adjustable profile with ergonomic 40° alignment
- Signal lamp
- 3-phase mains panel with protection from unintentional restart
- Residual-current devices type B
- Circuit breakers
- CEE sockets 16 A
- Shockproof sockets 230 V
- RJ45 mounting socket



### Bench vice with height adjustment and folding device

- Available in different versions

# Learning space – Electronics



## Relax Cube

- Functional seating furniture in different designs
- Flexible usage options
- Model with drawers or with hinged doors
- Customisable with shelf, optionally with slotted mats for installing DIN A4 didactic boards



## Mobile workbench

- Flexible room design by simply moving the furniture
- Sturdy aluminium profile workbench legs
- 4 x swivel castors, 2 x with brake
- Laminate worktop with edging strip or replaceable Flexiline edge
- Possibility of docking to a Primus One® base unit





Having an efficient room design in the training workshop makes a lot of sense, particularly if space is limited or the learning situation changes. ELABO's multifunctional solutions will always adapt exactly to your requirements. For example, combining six workstations into one workbench is particularly space-saving and ideally suitable for efficient room design. The workstation's design blends in perfectly with a contemporary learning environment. The mobile workbenches, in combination with the Primus One® base units and the Relax Cubes, make flexible adjustment to the teaching situation possible. Hands-on exercises or group work – it only takes a few simple steps to adapt the learning environment. The ideal combination of theory and practice.



#### Mobile storage space solution

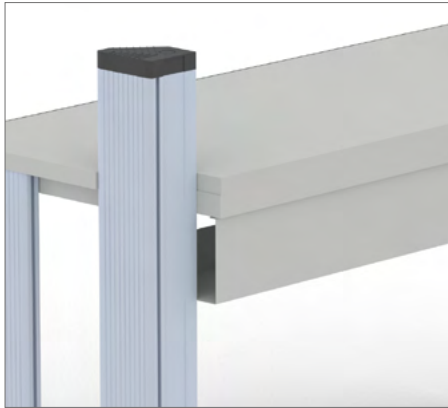
- Mobile storage space solution for hanging up cables and slotted mats and installing didactic boards
- Two hinged doors at the front, and two at the back
- Lockable
- 4 × swivel castors, 2 × with brakes



#### Hexagon workbench

- Six workstations
- Customisable motorised fold-away 2-row 3HU cockpit superstructure
- Sockets attached above the superstructure
- Lockable base units with drawers
- Modern design

# Laboratory space – Automation technology



## Large-volume cable duct

- For horizontal cable routing
- Ideal for routing cables through rows of workbenches
- Front access



## Roller shutter cabinet

- Equipped with a centre wall and shelves
- Optionally available with slotted mats
- Lockable





Use our automation technology laboratory space to immediately turn theoretical principles into action. There is plenty of room for the essentials on Primus One® theory workstations thanks to their electrification inside the adjustable profiles and the large-volume cable duct, which leaves the worktop clear. The practical training workstations are equipped with customisable adjustable profiles and replaceable frame profiles for turning theory into practice.



### Primus One® lecturer workstation

- Adjustable profile for installing TFT holders
- 3HU fold-away technology
- Mini PC can be installed directly between the monitor and the monitor holder



### Primus One® theory workstation

- Primus One® adjustable profile
- Shockproof socket 230 V
- RJ45 mounting socket
- USB mounting socket with built-in voltage supply



### Primus One® laboratory workbench

- Lockable base unit with hinged door
- Adjustable worktop with replaceable front edge
- Primus One® adjustable column
- Mains panel
- Universal power supply
- Emergency stop
- Shockproof socket 230 V

# Preparation and storage



Primus One® laboratory workbench for preparation

- 3HU electronics superstructure
- LED organiser light
- Primus One® adjustable profiles
- Base unit with full extension drawers



Optimum preparation is the perfect basis for successful and stress-free (practical) teaching. The storage solutions from ELABO provide plenty of room for neatly arranged teaching resources. The Primus One® laboratory workbench can be customised to your requirements.



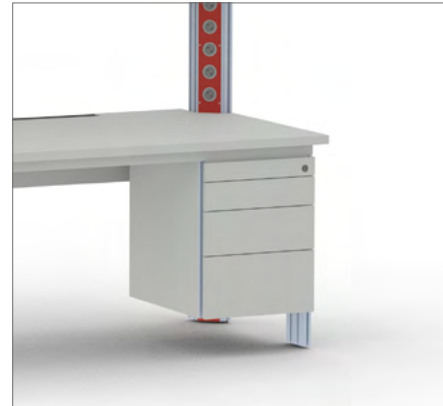
#### Tall cabinets

- Customisable storage space solution
- Can be arranged in rows in any order
- The height of the above-counter elements is customisable
- Available with shelves, full extension drawers or slotted mats
- Optional: Sturdy and functional conductor routing



#### Side cabinets

- Customisable storage space solution
- Available with hinged doors, sliding doors, full extension drawers, roller shutters or as open shelving
- Available in three widths and two heights
- Also available as a corner element



#### Base units and pedestals

- Customisable storage space solution
- Available with hinged doors or full extension drawers
- Front panels available with or without handles
- Smooth-running metal drawers with soft closing mechanism
- Central lock with flip key, with master key system capability
- Tamper-proof drawer stop



#### Customisable storage space solutions

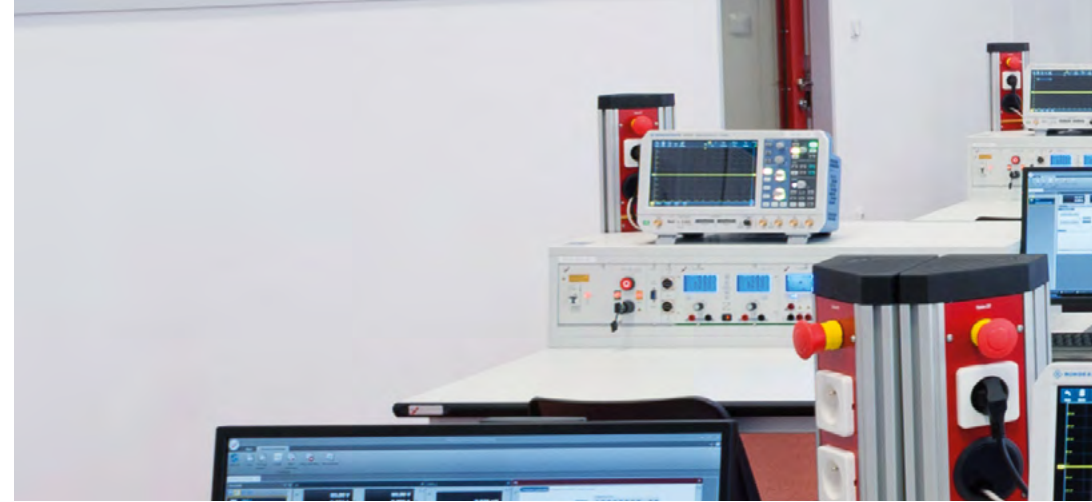
- ELABO provides you with customisable storage solutions for your specific requirements

# Elution<sup>®</sup> software

The software suite for your training needs

## The all-round carefree package.

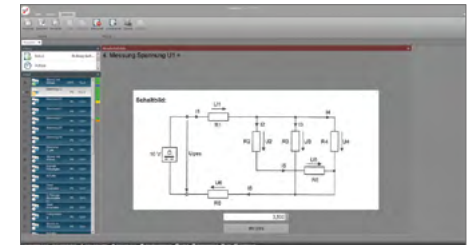
Elution<sup>®</sup> software includes an extensive bundle of functions for your training needs. It helps instructors to keep an eye on workstations and students while allowing the apprentices to carry out their work using modern solutions at the same time. It is based on an installation on the instructor's PC which allows the instructor to control and release workstations and equipment technology. When this is extended to include the student workstations, they can use all of the features of the integrated devices and carry out experiments independently. The instructor always has priority access to all functions and devices.



## Interactive digital work instructions

The interactive digital work instructions of the Elution<sup>®</sup> software support you in the creation or presentation of course content, integrating voltage sources, function generators and measuring equipment in the experiment and when logging all of the results.

Safety is guaranteed by the fact that the equipment parameters are limited in every work step when carrying out experiments. This helps you to convey the course content to your apprentices in a sustainable and safe manner.



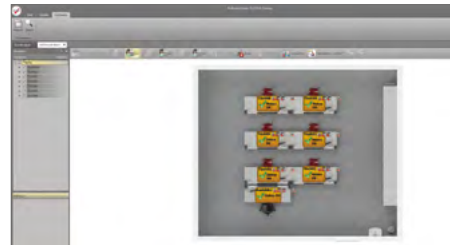
## Your benefits

- Reactivate (forgotten) knowledge of your apprentices using simple instructions
- Interactively convey theoretical and practical information
- Easy creation of evaluations
- Ensure occupational health and safety by using pre-set limit values
- Ensure correct implementation of the basics in the experiment setup
- Use of digital exercises for repeatability
- Optimum facilities for monitoring learning success
- Automatic output of log files and error detection



### Room control system

The room control system of the Elution® software provides you with an overview of all active student workstations. From your instructor workbench you can release the student workstations with fold-away workbench systems, activate different voltage levels (e.g. low voltage, mains voltage, PC mains), define limit values for all devices in the room (e.g. free setting from 0–24V) or specify fixed values for supply equipment individually (e.g. 5V or 12V fixed voltage). You can design the room layout as you wish, completely in accordance with the situation on site.



### Your benefits

- Active voltage levels are visible at a glance
- Components are given reliable protection by limiting the voltage and the current strengths
- Activated emergency stops are detected immediately
- Easy remote control of the workstations
- “The front is where the action is” – the instructor decides which workstations and equipment to release

### Equipment control system

You can extend the scope of functionality of the device interface using the device control system of the Elution® software, carry out endurance tests and control power supply sources and function generators. The Elution® software allows you to reliably record the data of connected measuring systems.

You can then export the recorded data in CSV format for further analysis. The experiment user interface can be individually adapted to specific needs and requirements (e.g. only voltage source and digital multimeter).



### Your benefits

- Clearly arranged equipment, limited to the essentials
- Use Drag & Drop to easily create a user interface
- One software for all equipment types
- Digital user interface for controlling the equipment
- Direct visualisation of measuring sequences
- Analysis and further processing of the measuring data
- Third-party equipment can also be integrated

# Accessories for training

The complete bundle for your training.  
We at ELABO are experts in the overall area of technical training, and would be pleased to devise a coherent overall concept for you, including accessories. Our expert planners will visit you at your premises to collect and agree on all of the key criteria with you.



Chairs



Connecting cable and measuring lead holders



Experiment carriers



Mobile



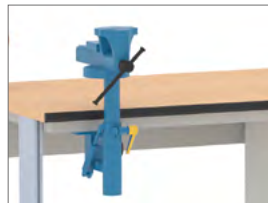
TFT monitor and PC holders



Storage solutions



Lighting



Bench vices



ESD accessories



LED signal lamps



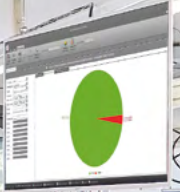
Tools



Hygiene solutions



ON AIR



Testing



[www.elabo-shop.de](http://www.elabo-shop.de)



[www.elabo.de](http://www.elabo.de)

ELABO GmbH –  
a Bott Group company  
Roßfelder Straße 56  
74564 Crailsheim  
Germany  
Phone +49 7951 307-0  
Fax +49 7951 307-66  
[info@elabo.de](mailto:info@elabo.de)  
[www.elabo.com](http://www.elabo.com)